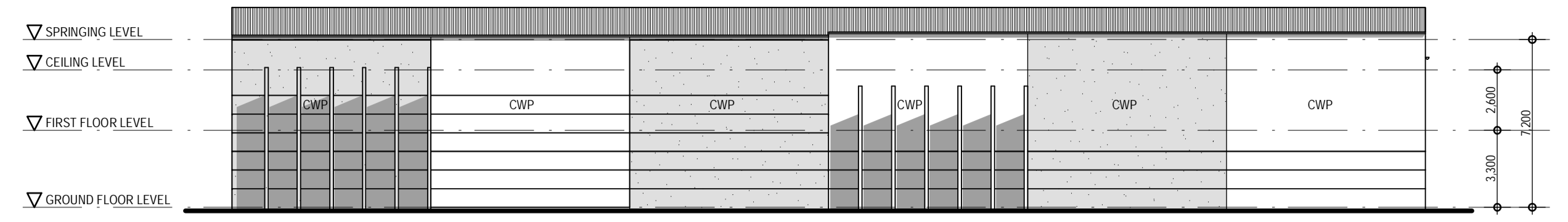


SITE PLAN / FLOOR PLAN - Ground Floor Level
SCALE 1:200

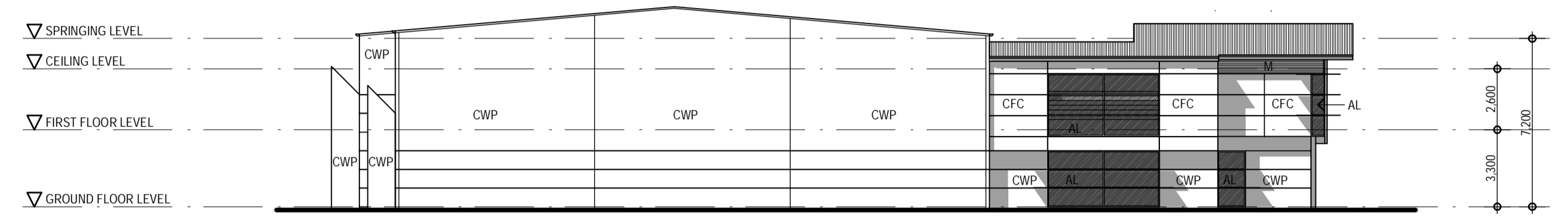
PROJECT ANALYSIS
SITE AREA LOT 4: 2875sqM
GROSS FLOOR AREAS
 WAREHOUSE AND ANCILLARY OFFICES: 1657sqM TOTAL
 GF 1346sqM+129sqM=1475sqM
 ANCILLARY OFFICES: FF 182sqM
CARPARKING
 1 CARS/100sqM GROSS FLOOR AREA
 = 17 CARS REQUIRED
SITE COVER
 ((CARsx16sqM/CAR)+COVERED AREAS)/SITE AREAx100%
 =66% SITE COVER APPROX
LANDSCAPING
 LANDSCAPED AREA = MINIMUM 10% OF SITE AREA
 REQUIRED AREA = 288sqM
 PROVIDED AREA = 406sqM = 14.1%

FLOOR PLAN - First Floor Level
SCALE 1:200

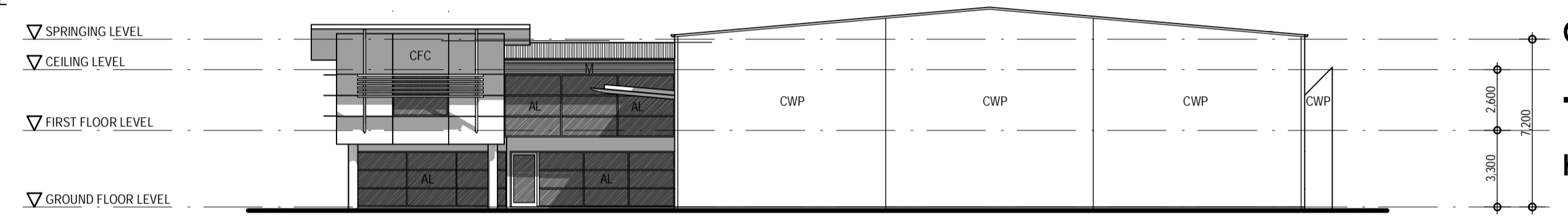
- LEGEND**
- AL ALUMINIUM FRAMED GLAZING
 - CFC COMPRESSED FC
 - CWP CONCRETE WALL PANEL
 - M HORIZONTAL COLORBOND CLADDING
 - RS ROLLER SHUTTER



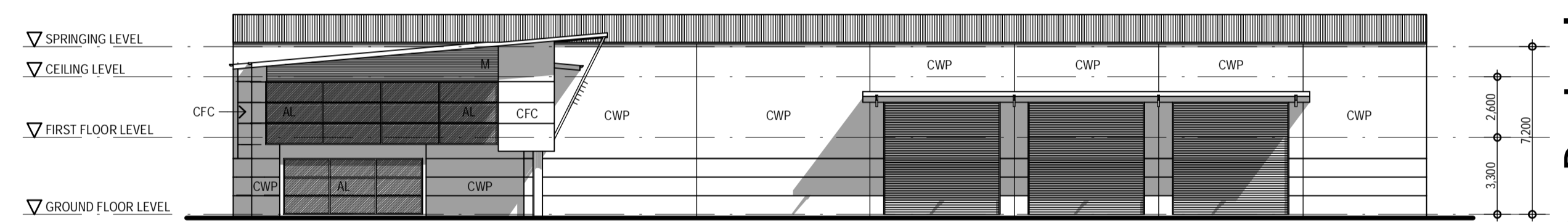
ELEVATION - North
SCALE 1:200



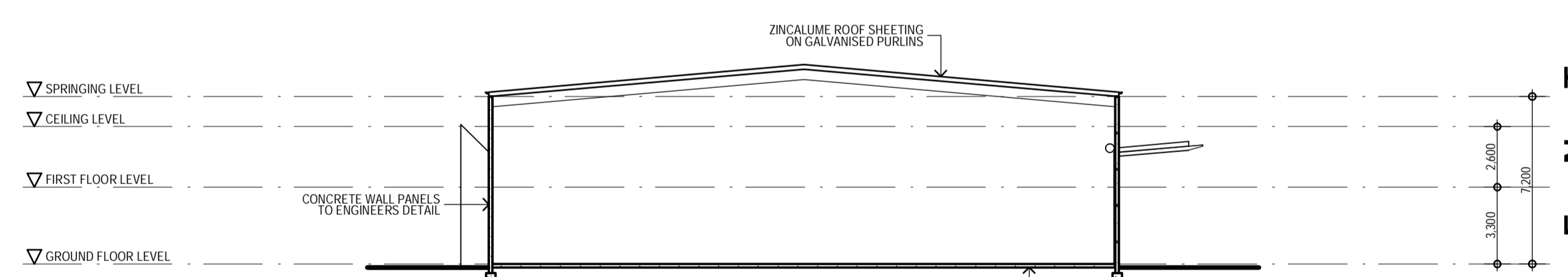
ELEVATION - West
SCALE 1:200



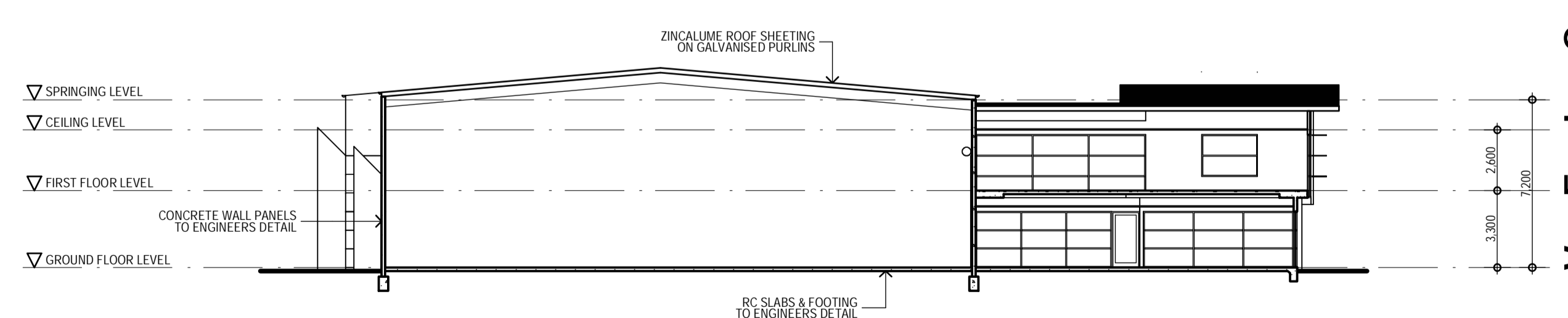
ELEVATION - East
SCALE 1:200



ELEVATION - South
SCALE 1:200



TYPICAL SECTION
SCALE 1:200



TYPICAL SECTION AT OFFICE
SCALE 1:200

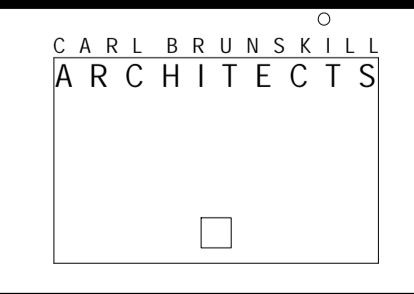
DEVELOPMENT APPLICATION

PLOT DATE: Friday, 14 September 2007 12:52 PM

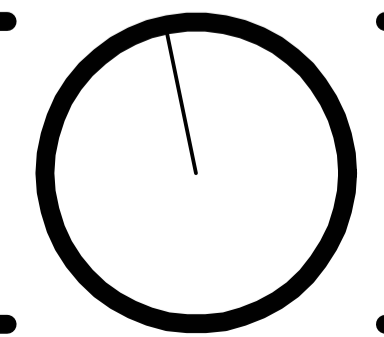
NEW WAREHOUSE SITE PLAN, ELEVATIONS & SECTIONS

LOT 4 SP 180591
CNR WEMBLY ROAD & PAGEDWOOD STREET BERRINBA

SCALE 1:200 A1
JULY 2007



THE ROYAL AUSTRALIAN
INSTITUTE OF ARCHITECTS
CARL BRUNSKILL ARCHITECTS PTY LTD
A/C/O 03003048
27 ANABELLE PLACE CHAPEL HILL QLD 4069
FAX (07)30191713
PHONE (07)30191026



A	DEVELOPMENT APPLICATION - 08/08/2007	DRAWINGS NOT INITIALED AS APPROVED OR APPROVED AMENDMENTS ARE TO BE TREATED AS PRELIMINARY ONLY.
B	REVISED DEVELOPMENT APPLICATION - 14/09/2007	THE COPYRIGHT OF THIS DOCUMENT RESIDES WITH CARL BRUNSKILL ARCHITECTS PTY LTD. NO LICENCE IS INFERRRED OR GIVEN TO FURTHER DOCUMENTATION WITHOUT WRITTEN CONSENT. DO NOT SCALE DRAWINGS.
	CHECKED	APPROVED AND SIGNED BY
		DATE: 14/09/2007

200710
SK 5 B