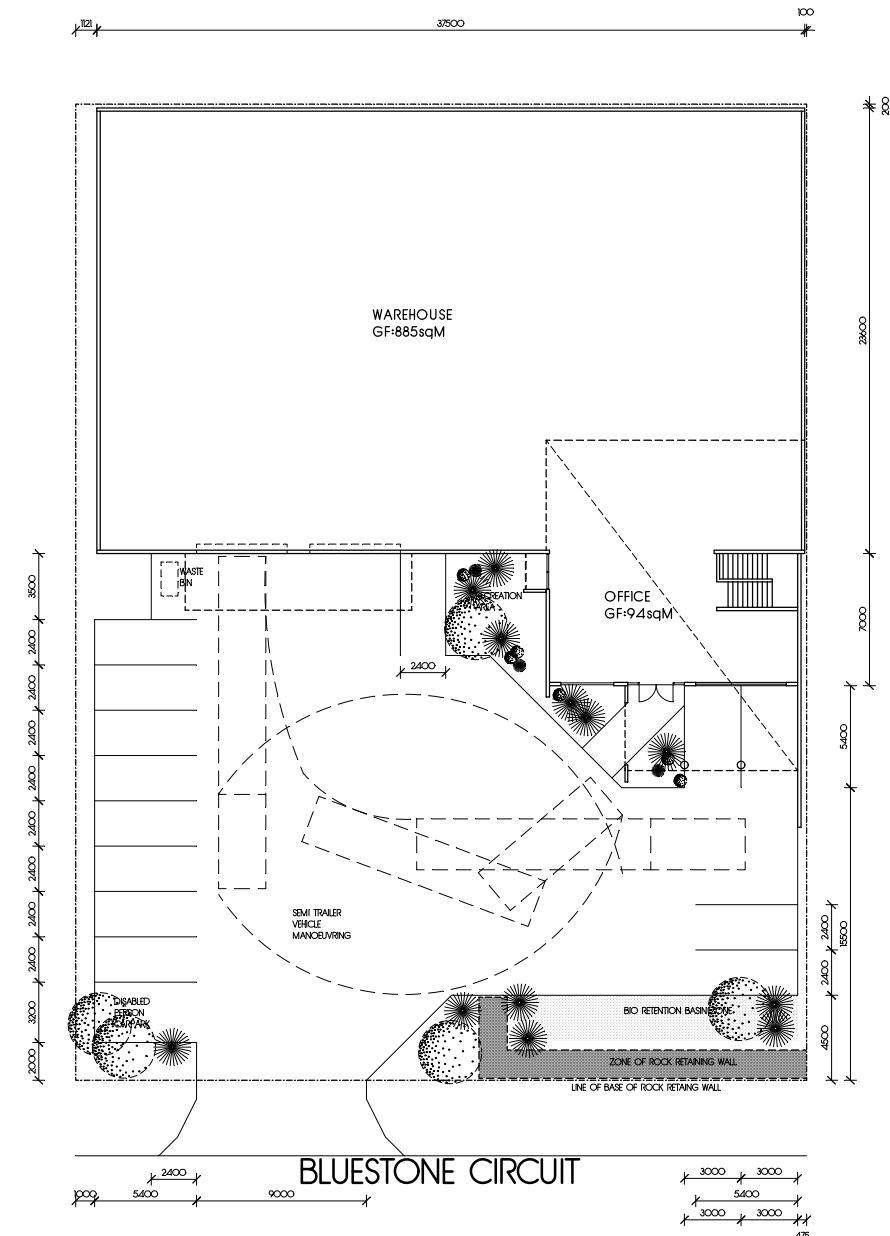
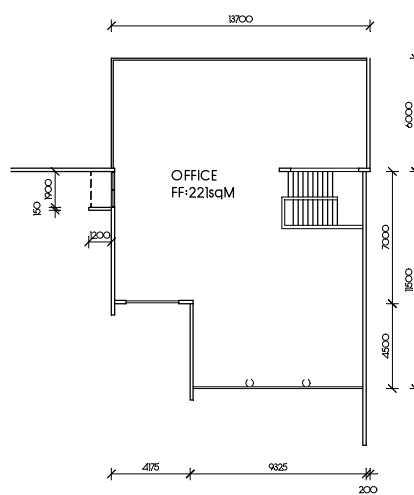


- LEGEND
- AL ALUMINIUM FRAMED GLAZING
 - CMP CONCRETE WALL PANEL
 - RS ROLLER SHUTTER
 - CFC COMPRESSED FIBRE CEMENT



FIRST FLOOR PLAN

SITE PLAN/GROUND FLOOR PLAN

PROJECT ANALYSIS

SITE AREA LOT 28: 2002sqM

GROSS FLOOR AREAS
WAREHOUSE AND ANCILARY OFFICES:
GF:979+221=1200sqM

LANDSCAPING
211sqM APPROX: 10.5% OF SITE

CARPARKING
2+1 CAR/100sqM GROSS FLOOR AREA
=14CARS REQUIRED/14 CARS PROVIDED

SITE COVER
10CARS/66sqM CARP+COVERED AREAS/SITE AREA/100%
=64% SITE COVER APPROX

SITE PLAN/FLOOR PLANS/ELEVATIONS

SUBJECT TO AUTHORITY APPROVALS AND FINAL SURVEY

SCALE 1:200 (A1)
FEBRUARY 2009

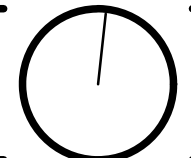
NEW WAREHOUSE UNIT

LOT 28 BLUESTONE CIRCUIT
DARRA

CARL BRUNSILL ARCHITECTS

180 KING STREET
SUITE 101
DARRA QLD 4084

REGISTERED ARCHITECTS
REGISTERED ARCHITECTS PTY LTD
2/200 BRISBANE STREET
DARRA QLD 4084



A	PLANNING APPLICATION 100209	DRAWINGS NOT INTENDED AS APPROVED OR APPROVED AMENDMENTS ARE TO BE TREATED AS PRELIMINARY ONLY. THE COPYRIGHT OF THIS DOCUMENT RESIDES WITH CARL BRUNSILL ARCHITECTS PTY LTD. NO LICENSE IS INFERRED OR GIVEN TO FURTHER DOCUMENTATION WITHOUT WRITTEN CONSENT. DO NOT SCALE DRAWINGS.
	CHECKED	
	APPROVED AND SIGNED BY	
	DATE	

200837

SK 3 A