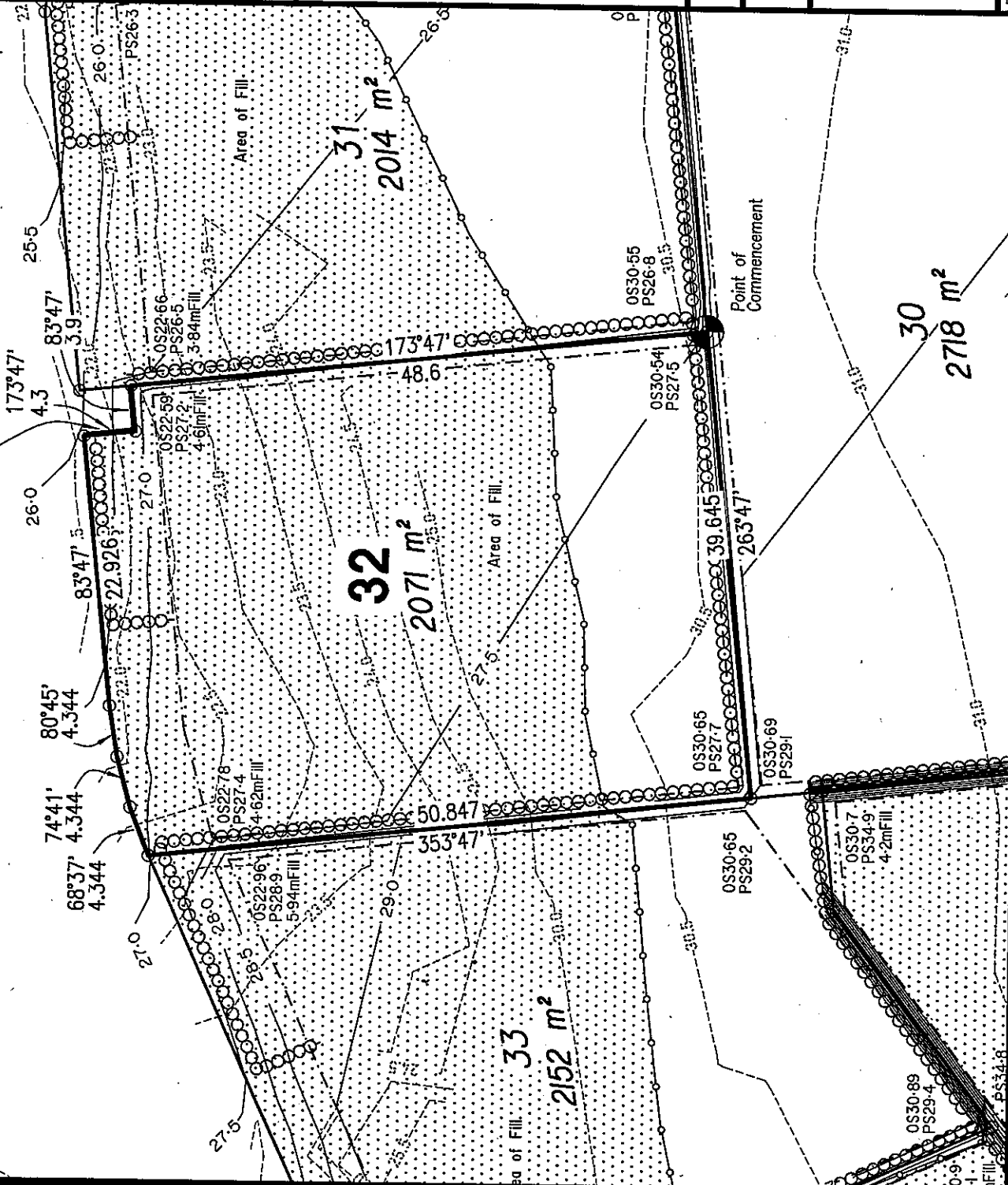


BLUESTONE CIRCUIT

Masonry Retaining Wall



Disclosure Plan

For Proposed Lot 32
on SP 206828

Seventeen Mile Rocks

Described as part of lot 2 on RP 110155,
Parish of Oxley, County of Stanley,
Local Authority: Brisbane City.

Meters and Bounds

From the Initial Point being the southeast corner of lot 10 on SP 163903 at a bearing of 102°31'55" for a distance of 366.164m to the Point of Commencement, then:
Bearing 263°47' for a Distance of 39.645m, Bearing 353°47' for a Distance of 50.847m, Bearing 68°37' for a Distance of 4.344m, Bearing 74°41' for a Distance of 4.344m, Bearing 80°45' for a Distance of 4.344m, Bearing 83°47' for a Distance of 22.926m, Bearing 173°47' for a Distance of 4.3m, Bearing 83°47' for a Distance of 3.9m, Bearing 173°47' for a Distance of 48.6m.

Notes and Legend

Areas and Dimensions are subject to plan registration. Proposed surface information is derived from digital data supplied by Brown Consulting Pty Ltd on 28/02/2008. Original Surface (the ground surface at the time of earliest survey) information was surveyed by Conics in November 2005 and August 2007. Fill depths and fill areas are calculated against the 2005 ground surface. The amount of fill placed before 2005 is not known. Not all areas were available for ground surface survey in 2005. The locations of retaining walls and earthworks batters shown on this plan are indicative only, see detailed engineering drawings for the dimensions of any structures that may affect the lot.

- Area of Fill
- OS 15-64 Original surface contour and surface level
- PS 15-64 Proposed surface contour and pad level
- 1.2m Fill
- Depth of Fill
- Proposed Pad
- Proposed Retaining Wall

Scale: 1:500

Height Datum: AHD
Origin: PM 154918

SAA
Cadastral Surveyor

4/3/08
Date

CONICS



CONICS (BRISBANE) PTY LTD
A.C.N. 010370448
A.B.N. 81591046688
743 ANN STREET
PO BOX 1589
FORTITUDE VALLEY QLD 4006.
TELEPHONE 07 3237 8839
FACSIMILE 07 3237 8833
email: conics@conics.com.au
web: www.conics.com.au

COPYRIGHT PROTECTS THIS PLAN
Unauthorized reproduction or amendment
not permitted. Please contact the author.

Filename: 20200D\is32

Plan Number: 20200-D-32