

PROJECT ANALYSIS

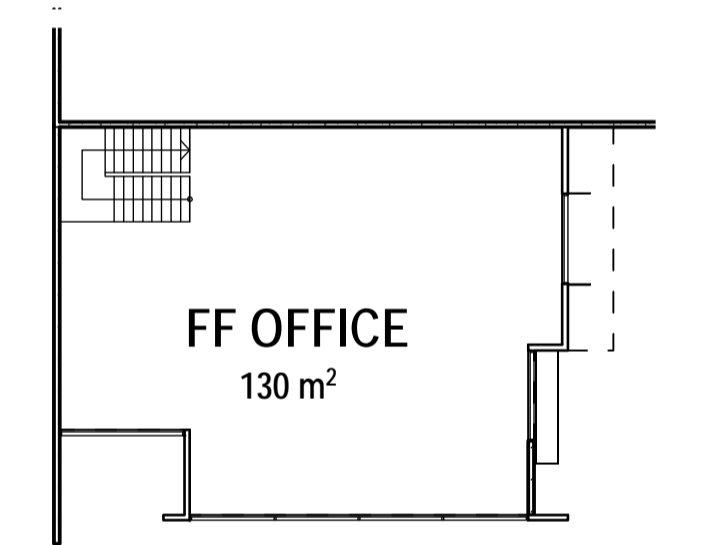
SITE AREA LOT 3: 2227sqM

GROSS FLOOR AREAS
 WAREHOUSE AND ANCILLARY OFFICES: 1252sqM TOTAL
 GF 1047sqM+75sqM=1122sqM
 ANCILLARY OFFICES: FF 130sqM

CARPARKING
 1 CARS/100sqM GROSS FLOOR AREA
 = 13 CARS REQUIRED

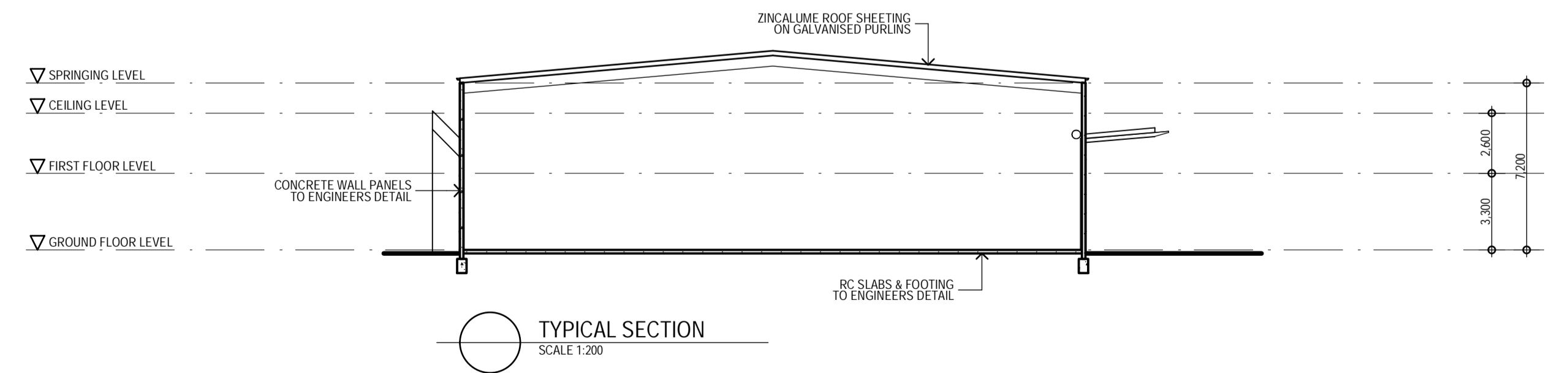
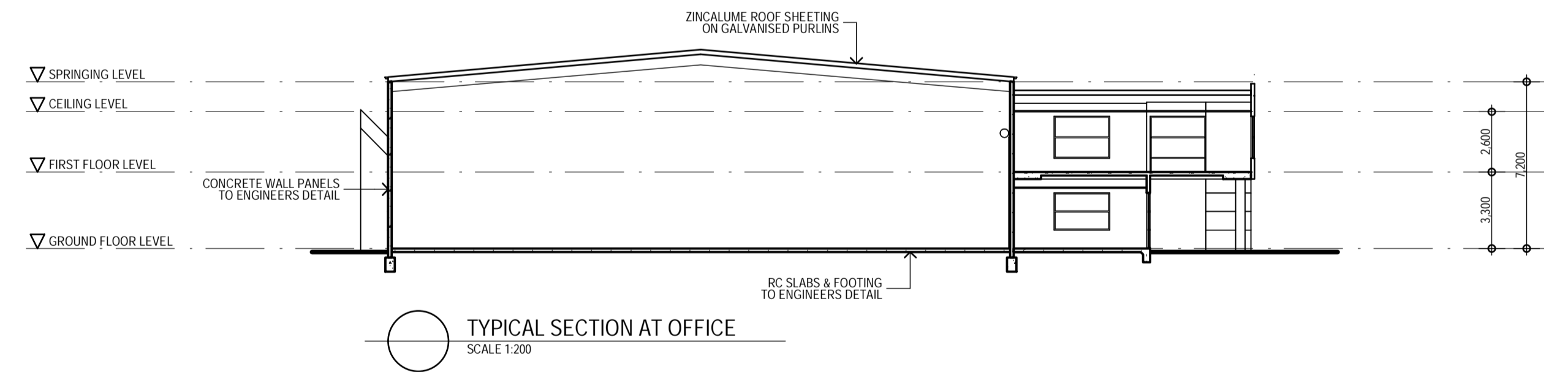
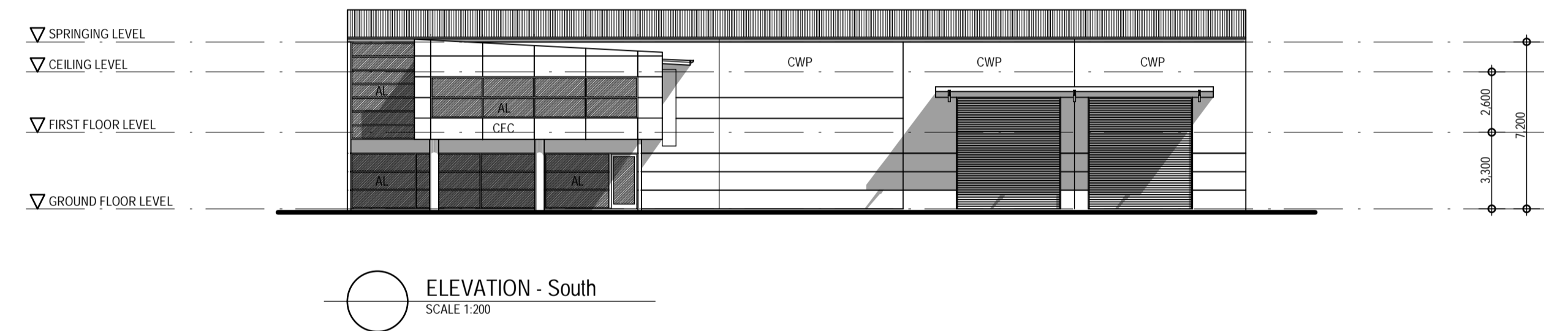
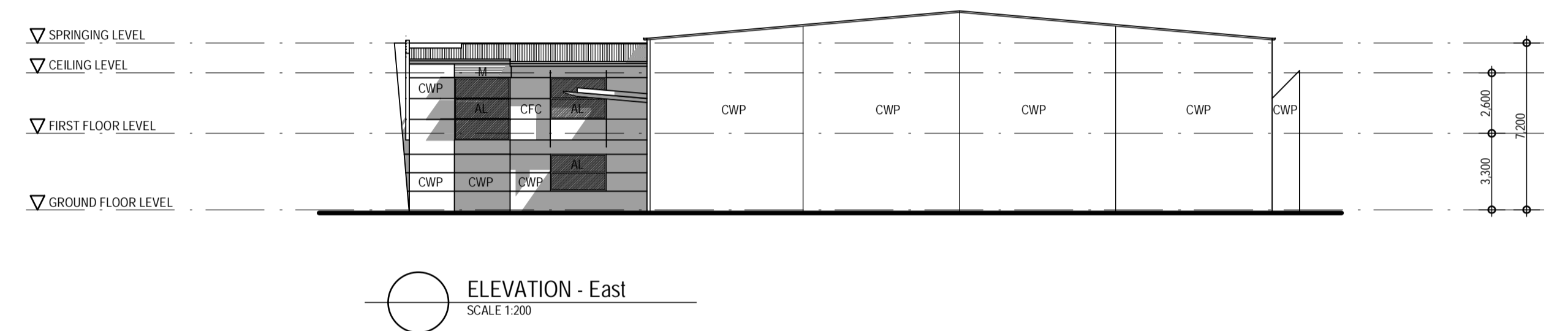
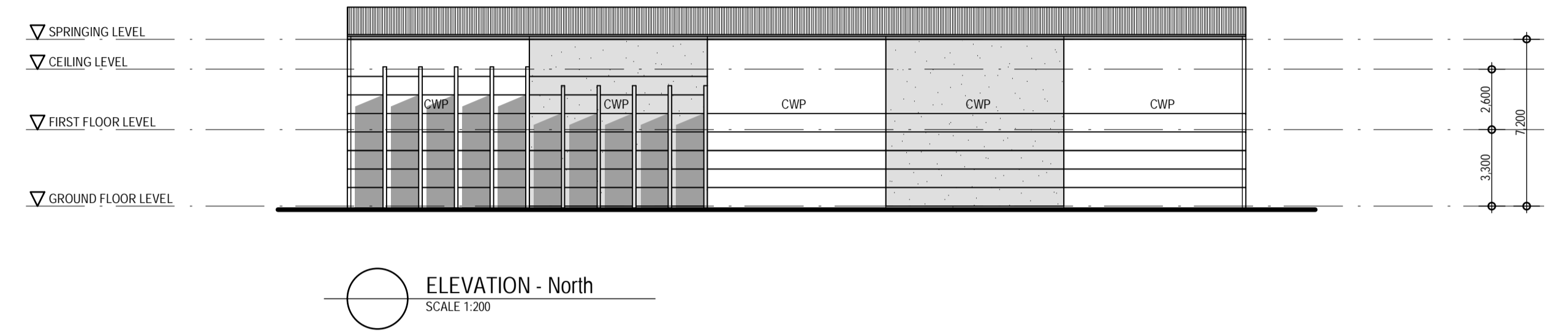
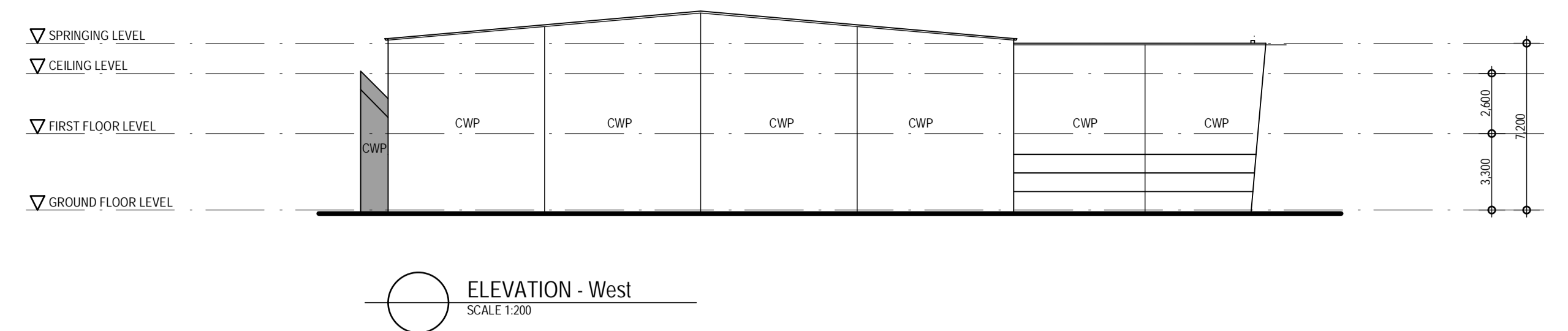
SITE COVER
 [(CARSx16sqM/CAR)+COVERED AREAS]/SITE AREAx100%
 =62% SITE COVER APPROX

LANDSCAPING
 LANDSCAPED AREA = MINIMUM 10% OF SITE AREA
 REQUIRED AREA = 223sqM
 PROVIDED AREA = 224sqM = 10%



LEGEND

AL ALUMINIUM FRAMED GLAZING
 CFC COMPRESSED FC
 CWP CONCRETE WALL PANEL
 M HORIZONTAL COLORBOND CLADDING
 RS ROLLER SHUTTER



DEVELOPMENT APPLICATION

PLOT DATE: Wednesday, 8 August 2007 12:06 PM

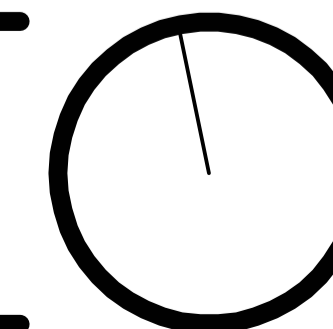
NEW WAREHOUSE

SITE PLAN, ELEVATIONS & SECTIONS

LOT 3 SP 180591
 CNR WEMBLY ROAD & PAGEDOOD STREET BERRINBA

SCALE 1:200 A1
 JULY 2007

CARL BRUNSKILL
 ARCHITECTS



A DEVELOPMENT APPLICATION - 08/08/2007	
DRAWINGS NOT INITIALED AS APPROVED OR APPROVED AMENDMENTS ARE TO BE TREATED AS PRELIMINARY ONLY. THE COPYRIGHT OF THIS DOCUMENT RESIDES WITH CARL BRUNSKILL ARCHITECTS PTY LTD. NO LICENCE IS INFERRED OR GIVEN TO FURTHER DOCUMENTATION WITHOUT WRITTEN CONSENT. DO NOT SCALE DRAWINGS.	
CHECKED	APPROVED AND SIGNED BY
DATE: 08/08/2007	DATE: 08/08/2007

200710

SK 4 A